

SPARE PARTS FOR 1900 SERIES SOLAR-RAY® SEARCHLIGHTS

ORDERING INFORMATION

Fig. No.	Front Glass Cat. No.	Front Door with Glass Cat. No.	Rear Cover Cat. No.	Reflector* Cat. No.	Pinion Gear Cat. No.
1901	889 004 CLR	1936 000 WHT	1932 000 WHT	890 004	----
1902	889 004 CLR	1936 000 WHT	1933 000 WHT	890 004	905
1903	889 004 CLR	1936 000 WHT	1933 000 WHT	890 004	905

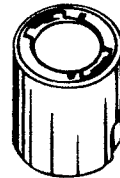
*Replacement Retaining Clips (Cat. No. 911) for the Reflector Should Also Be Ordered When Ordering a Replacement Reflector to Assure a Proper Fit.

**SPARE SOCKETS
FOR 800 SERIES AND 1900 SERIES SOLAR-RAY® SEARCHLIGHTS**

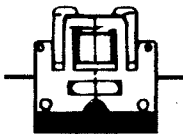
ORDERING INFORMATION



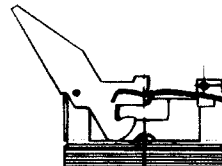
Medium Screw Socket
(Code "B")
Catalog No. 894.



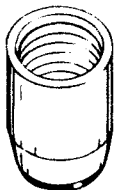
Medium Prefocus Socket
(Code "E")
Catalog No. 895.



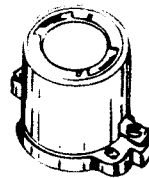
2-Pin Prefocus Socket
(Codes "F, G, H & I")
Catalog No. 899.



2-Pin Prefocus Socket
(Code "K")
Catalog No. 866.



Mogul Screw Socket
(Codes "D")
Catalog No. 897.



Mogul Prefocus Socket
(Codes "L & M")
Catalog No. 893.

*For Use In 10", 12" and 14" Searchlights Except When Catalog No. 839, 900 Watt Bulb is Used.

**For Use In 12", 14" and 19" Searchlights Only When the Catalog No. 839, 900 Watt Bulb is Used.