

KEVLAR® ROPE FITTINGS EXTRUDED JACKET

• U.S. Patent #4,509,233 • 5,308,026

Electroline patented, jacketed Kevlar rope fittings excel in meeting the needs for a quick, reliable end termination for a variety of Kevlar ropes. Tests have been conducted by Electroline's engineering staff on the following extruded jacket materials:

Polyurethane

Nylon II

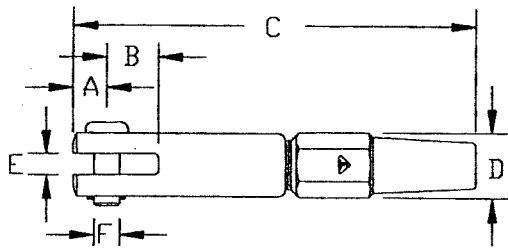
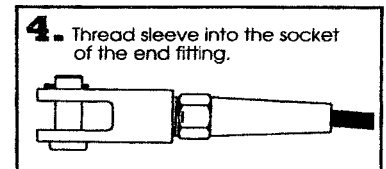
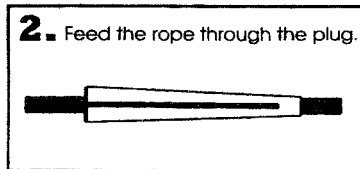
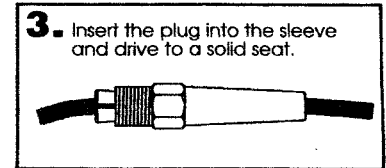
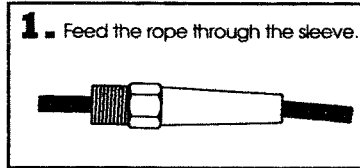
Hytrel

and the following types or rope construction:

7x19

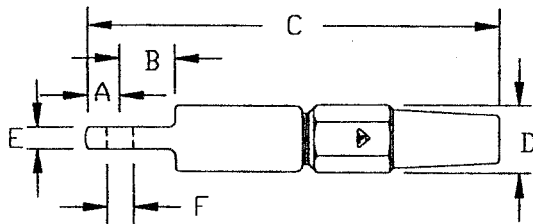
Parallel

Electromechanical



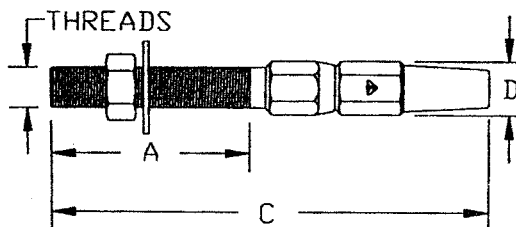
Clevis Socket Assembly

Rope Diameter	Catalog No.		Dimensions (inches)					
	Aluminum		A	B	C	D	E	F
3/16	KA118		1/2	3/4	4-15/16	15/16	3/8	3/8
1/4	KA125		19/32	7/8	6	1-1/16	3/8	7/16
5/16	KA131		21/32	1	7-9/16	1-3/16	7/16	1/2
3/8	KA137		3/4	1-1/4	8-1/2	1-3/8	7/16	5/8
7/16	KA143		27/32	1-3/8	11	1-9/16	1/2	11/16
1/2	KA150		27/32	1-3/8	11-1/8	1-3/4	1/2	11/16
9/16	KA156		1-5/32	1-17/32	12-3/4	2	11/16	15/16
5/8	KA162		1-11/32	1-17/32	14-5/8	2-3/8	3/4	1-1/8
3/4	KA175		1-1/2	1-7/8	16-5/16	2-5/8	13/16	1-1/4



Eye Socket Assembly

Rope Diameter	Catalog No.		Dimensions (inches)					
	Aluminum		A	B	C	D	E	F
3/16	KA218		1/2	13/16	4-15/16	15/16	23/64	25/64
1/4	KA225		19/32	27/32	6	1-1/16	23/64	27/64
5/16	KA231		21/32	31/32	7-9/16	1-3/16	27/64	33/64
3/8	KA237		3/4	1-1/16	8-1/2	1-3/8	27/64	41/64
7/16	KA243		27/32	1-1/8	11	1-9/16	31/64	45/64
1/2	KA250		27/32	1-1/8	11-1/8	1-3/4	31/64	45/64
9/16	KA256		1-3/32	1-3/8	12-3/4	2	21/32	61/64
5/8	KA262		1-11/32	1-19/32	14-5/8	2-3/8	23/32	1-9/64
3/4	KA275		1-1/2	1-13/16	16-5/16	2-5/8	25/32	1-17/64



Stud Socket Assembly

Rope Diameter	Catalog No.		Dimensions (inches)			
	Aluminum		A	C	D	THD
3/16	KA318		4-3/4	8-3/8	15/16	1/2-20
1/4	KA325		4-3/4	9-3/8	1	9/16-18
5/16	KA331		5	10-7/8	1-1/8	5/8-18
3/8	KA337		5-1/8	11-7/8	1-1/4	3/4-16
7/16	KA343		6	15	1-1/2	7/8-14
1/2	KA350		6-3/4	16-1/8	1-3/4	1-14
9/16	KA356		7-1/8	17-1/2	2	1-1/8-12
5/8	KA362		7-1/8	18-7/8	2-1/8	1-1/4-12
3/4	KA375		8	21	2-1/2	1-1/2-12

NOTE: MA3800 Series plug supplied with each assembly