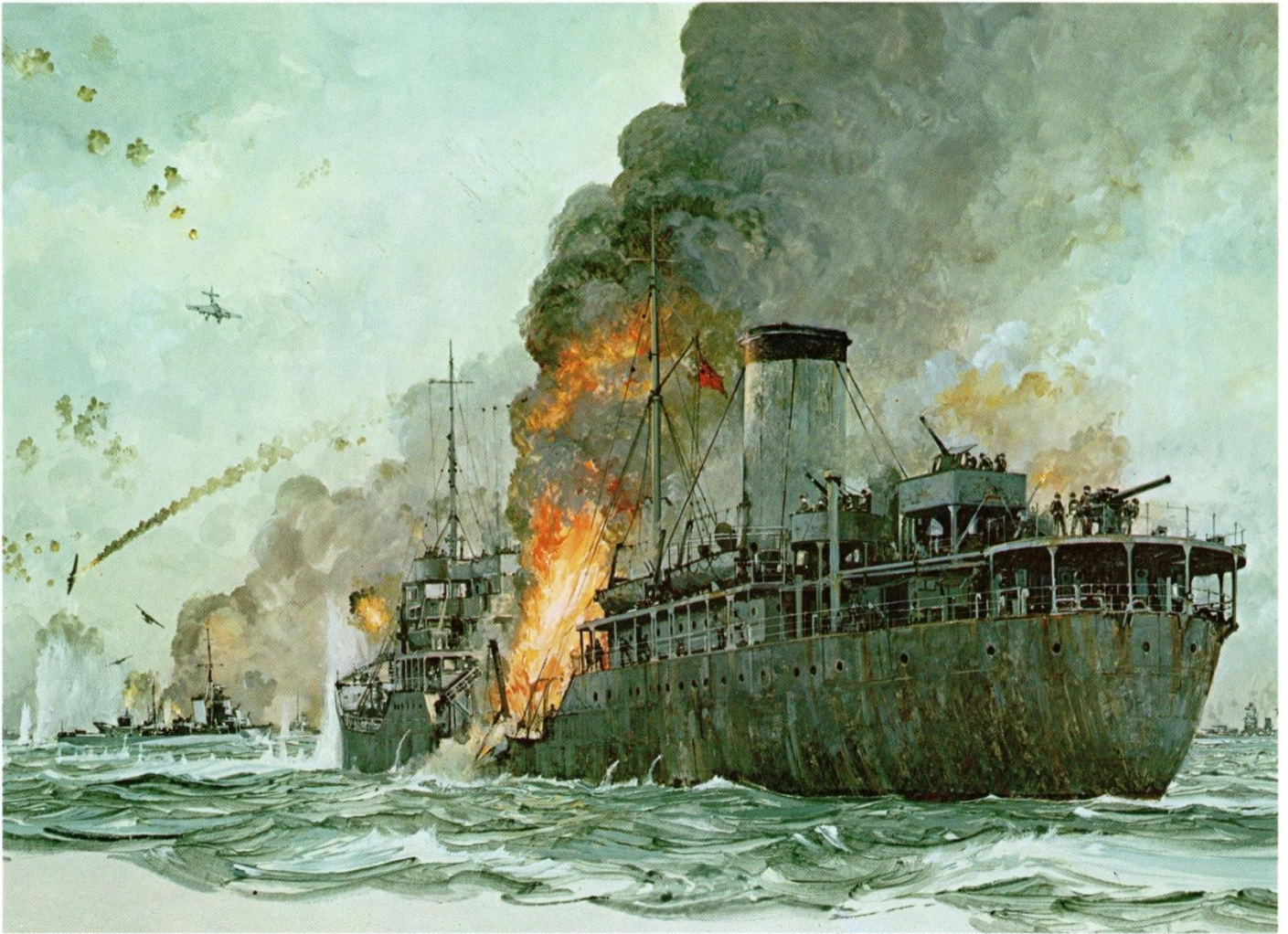


The Philadelphia Fleet



“The Ship That Saved Malta”

Sun Ship Built SS Ohio

Chris Mayger 1973

*Delaware Valley Shipyards
and their
Contribution During WW*

Delaware Valley Major Shipyards



Phila. Navy Yard

Philadelphia, Pennsylvania

50,000 employees

3 Aircraft Carriers, 3 Battleships, 3 Cruisers, 3 Destroyers, 21 Destroyer Escorts,
1 Mine Layer, 11 LSTs, 1 LSD, 3 Repair Ships and Tenders.



New York Ship

Camden, New Jersey

40,000 employees

9 Aircraft Carriers, 1 Battleship, 2 Battle Cruisers, 12 Cruisers, 100 LCTs, 48 LCIs, 6 Repair Ships and Tenders



Sun Ship

Chester, Pennsylvania

40,000 employees

7 Aircraft Carriers, 248 Tankers, 32 Cargo Ships, 6 Hospital Ships, 35 Car Floats

Delaware Valley Emergency Shipyards



Cramp Shipbuilding

Philadelphia, Pennsylvania

18,000 employees

5 Cruisers, 14 Submarines, 5 Tugs, 12 Repair Barges, 10 Lighters



Dravo

Wilmington Delaware

10,500 employees

15 Destroyer Escorts, 5 LSTs, 5 Patrol Craft, 18 Gate Vessels, 4 Seagoing Dredges, 65 LSMs, 35 Lighters,
5 Drydock Sections, 10 Floating Cranes, , 25 Car Floats.



Pusey & Jones

Wilmington Delaware

3,600 employees

18 Cargo Ships, 4 Tug, 2 Car Floats, 2 Hopper Dredges, 2 Cable Layers
22,000 aluminum gun turrets.

Delaware Valley Small Shipyards



American Car & Foundry

Jackson & Sharp yard

Wilmington Delaware

"Hundreds of employees"

1 Experimental Sub Chaser, 10 Minesweepers, 2 Salvage vessels, 4 Net Layers, 80 USN Landing Craft,
8 Launches, 3 Wood barges, 131 Chemical warfare barges, 226 Aluminum pontoons.

Bethlehem Steel,

Harlan yard

Wilmington, Delaware

250 employees

400 LCM(3)s



Delaware Bay

Leesburg, New Jersey.

300 employees

12 Sub Chasers, 2 Mine Sweepers, 4 Ocean Rescue Tugs,



Grater Bodey

Norristown, Pa.

100 Knockdown Barges



Mathis

Camden, New Jersey

11 Coastal Freighters, 8 Coastal Tankers, 4 Net Layers, 3 Mine Sweepers, 2 Power Boats,
5 Gasoline Barges, 2 Water Barges,



Penn Jersey

Gloucester, New Jersey

4 Sub Chasers, 6 Patrol Launches, 2 Minesweepers, 14 Cargo Ships, 1 Lighter

Phoenix Bridge

Phoenixville, Pa.

23 Knockdown Derrick Barges



Robins Shipbuilding

Delanco, New Jersey

39 employees

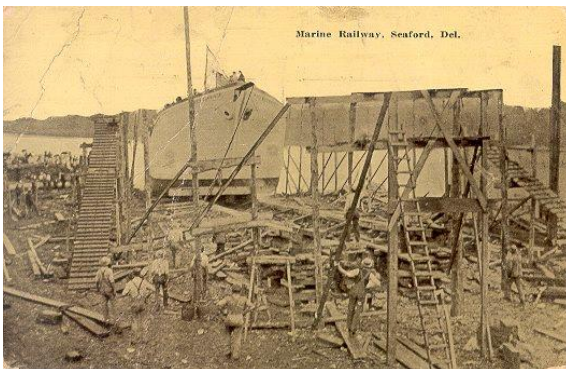
1 Ferry, 3 Army Engineer Boats, 2 barges



RTC

Camden, New Jersey

30 Yard Oilers, 3 Tankers



Seaford Shipbuilding

Seaford, Delaware

200+ employees

12 Lighters, 30 Rearming Boats, 1 Ice Breaker



Stowman

Dorchester, New Jersey

3 Coastal Freighters, 2 Tugs, 25 Launches, 15 Tenders, 4 SP Barges

Trumpy

(Formerly Mathis Yachts)

Gloucester, New Jersey

30 Sub Chasers, 4 Tugs, 30 Crash Boats

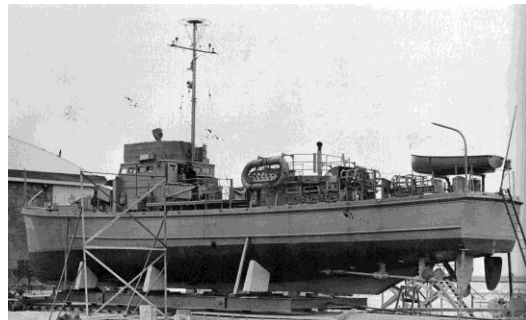


Vinyard

Milford, Delaware

120 employees

14 Sub Chasers, 12 motor launches,



Ventnor Boat Works

Atlantic City, New Jersey

6 Sub Chasers, 24 Rescue Boats, 20 Utility Boats, 10 Passenger Boats, 23 Quick Supply Boats, 1 Whale Boat

Regional Boatyards

Bethlehem Fabricators

Bethlehem, Pa.
24 Knockdown Barges

Henry Lowe Brownback

Morrisville, New Jersey
15 Rescue Boats

Cape May Shipbuilding

Cape May, New Jersey
3 Tugs, 2 Ferrys

Holtz Shipbuilders

Ocean City, New Jersey
28' Motor Launches, 1 Barge

Johnson Brothers

Point Pleasant, New Jersey
11 Tugs, 6 Passenger boats,

Morton Johnson

Bay Head, New Jersey
11 Tugs, 6 Passenger boats

Moyer & Son

Ocean City, New Jersey
41 Marine Tractor/Launches

Tippett & Wood

Phillipsburg, New Jersey
26 Barges

The Philly Fleet

Fleet Aircraft Carriers - 3



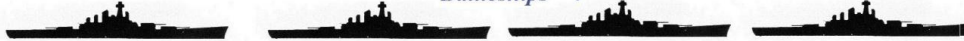
Light Aircraft Carriers - 9



Escort Aircraft Carriers - 7



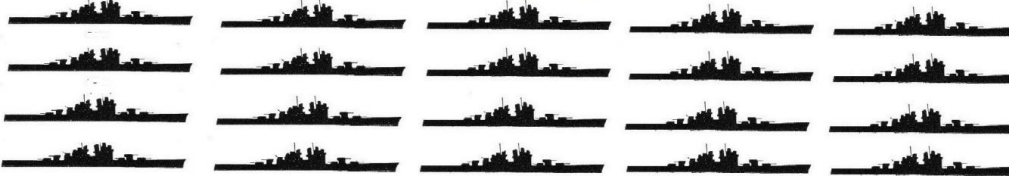
Battleships - 4



Battle Cruisers - 2



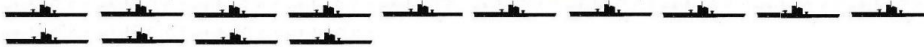
Cruisers - 20



Destroyers and Destroyer Escorts - 39



Submarines - 14



Mine Layers, Mine Sweepers - 18



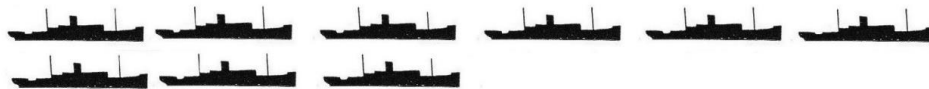
Subchasers and Patrol Craft - 72



Hospital Ships - 6



Repair Ships and Tenders - 9



LSD and LSTs - 17



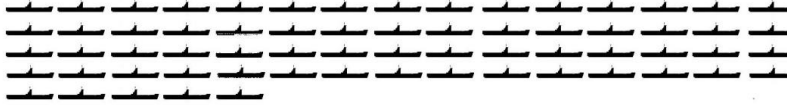
Net, Gate and Cable Layers - 28



Ocean, Harbor and Small Tugs - 74



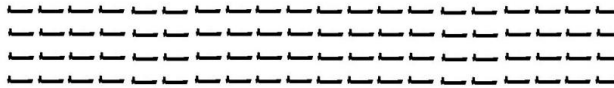
201' LSM - 65



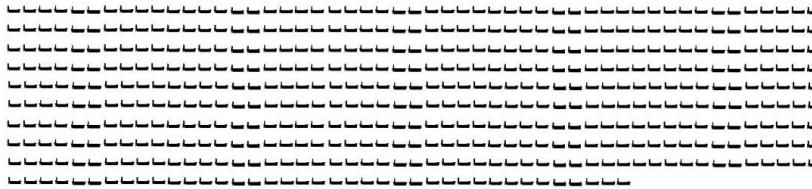
158' LCI - 48



110' LCT - 100



50' LCM - 488



Tenders, Launches and Boats - 224



Barges, Lighters and Floats - 476



Misc. Salvage, Ferry, Dredge and Icebreakers - 12



Cargo Ships - 78

